

Prodo enim Salus et Sanitas

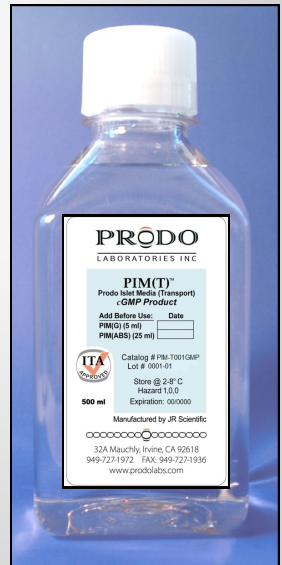
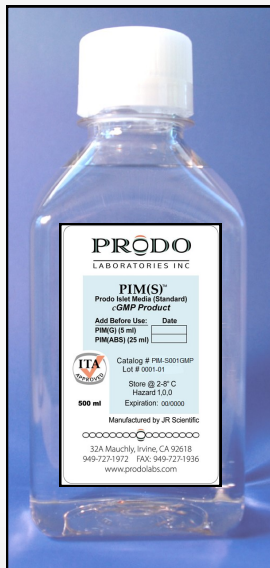
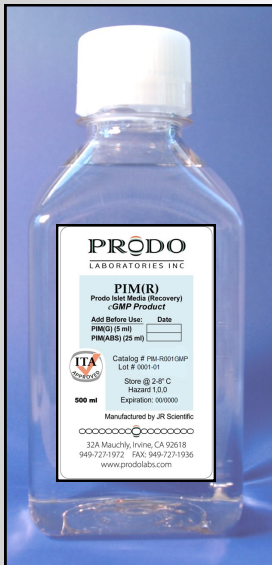
# PRŌDO

LABORATORIES INC

Deliver for Health and Well Being

The Advanced Solution For Culturing Islets

## cGMP Prodo Islet Media Catalog 2018



Biological Master File # IND-15016

Prodo Laboratories, Inc.  
27402 Aliso Viejo Parkway  
Aliso Viejo, CA 92656

(949) 727-1972  
www.prodolabs.com  
sales@prodolabs.com

## **cGMP Prodo Islet Media**

Prodo Islet Media (PIM)<sup>®</sup> are a group of islet specific media designed to cover the broad needs of recovering, maintaining, and transporting human islets, as well as islets of other species. All of our media prevent central necrosis from developing within the islets. There are currently three primary media and two required supplements in this group that are all manufactured under cGMP and approved for research applications and are approved for clinical applications. Our Biological Master File with the FDA is under **#IND-15016**.

### **PIM(R)<sup>®</sup> – Prodo Islet Media (Recovery)**

This islet specific tissue culture medium is designed for use immediately following islet purification for the first 48 hours at 37°C. It reduces islet recovery time to 12-18 hours. Islets begin to round up quicker and become functional for experiments.

### **PIM(S)<sup>®</sup> – Prodo Islet Media (Standard)**

This islet specific tissue culture medium is designed for short and long term islet maintenance following islet isolations, for up to 21 days at 37°C. It maintains islet compactness, DTZ staining, islet insulin responsiveness to glucose stimulation and it maintains insulin content throughout this culturing period. It is capable of culturing past 30 days, when used with PIM(R)<sup>®</sup>

### **PIM(T)<sup>®</sup> – Prodo Islet Media (Transport)**

This islet specific transport medium is designed for the transport of islets from the isolation center to research and transplant centers using cold or ambient temperature storage. It is totally different from the usual whole organ transport media, which are harmful to isolated islets, leading to the breakdown of single cells and damage to insulin secretory mechanisms. These problems do not occur when using our medium.

## **cGMP Prodo Islet Supplements**

### **PIM(G)<sup>®</sup> – Prodo Islet Media (Glutamine/Glutathione)**

PIM(G)<sup>™</sup> is a mixture of glutamine and glutathione that are required to activate our media. It needs to be supplemented every 30 days to keep the medium activated.

### **PIM(ABS)<sup>®</sup> – Prodo Islet Media (Human AB Serum)**

Each selected lot is heat inactivated and filtered under cGMP manufacturing after which it is tested against human islets to assure its effectiveness and safety. Once supplemented, it is good for 60 days.

**PIM® Islet Tissue Culture Media Products**

Identity	Catalog #	Description	Size	List Price	Disc. Sales Price*
PIM(R)®	PIM-R001GMP	Islet Recovery medium for 1 <sup>st</sup> 48 hours of tissue culture. Requires PIM(ABS)® & PIM(G)® for activation.	500 ml	\$90.00	\$75.00
PIM(S)®	PIM-S001GMP	Standard islet medium for short and long term culturing. Requires PIM(ABS)® & PIM(G)® for activation.	500 ml	\$90.00	\$75.00
PIM(T)®	PIM-T001GMP	Islet transport medium for cold or ambient temperature shipping. Requires PIM(ABS)® & PIM(G)® for activation.	500 ml	\$90.00	\$75.00
PIM(ABS)®	PIM-ABS001GMP	Human AB serum supplement for PIM(R)®, PIM(S)®, & PIM(T)®	25 ml	\$72.00	\$62.00
PIM(G)®	PIM-G001GMP	Glutamine & glutathione used to supplement PIM(R)®, PIM(S)®, & PIM(T)®	5 ml	\$35.00	\$31.00
Process Kit (Recovery)	PIM-PKR001GMP	9-500ml PIM(R)®, 9-5 ml PIM(G)® & 9-25 ml PIM(ABS)®	4.77 L	\$1773.00	\$1512.00
Process Kit (Recovery + Culture)	PIM-PKC001GMP	9-500 ml PIM(R)®, 8-500 ml PIM(S)®, 17-5ml PIM(G)® & 17-25ml PIM(ABS)®	9.01 L	\$3349.00	\$2856.00
Process Kit (Recovery + Transport)	PIM-PKT001GMP	9-500 ml PIM(R)®, 8-500 ml PIM(T)®, 17-5ml PIM(G)® & 17-25m PIM(ABS)®	9.01 L	\$3349.00	\$2856.00

**\*To qualify for our discounted sales price, you will need to purchase 5 or more bottles of PIM (R,S or T)® and the required supplements, PIM (ABS & G). Supplements purchased on their own do not qualify for discounted pricing\***

*Prodo enim Salus et Sanitas*

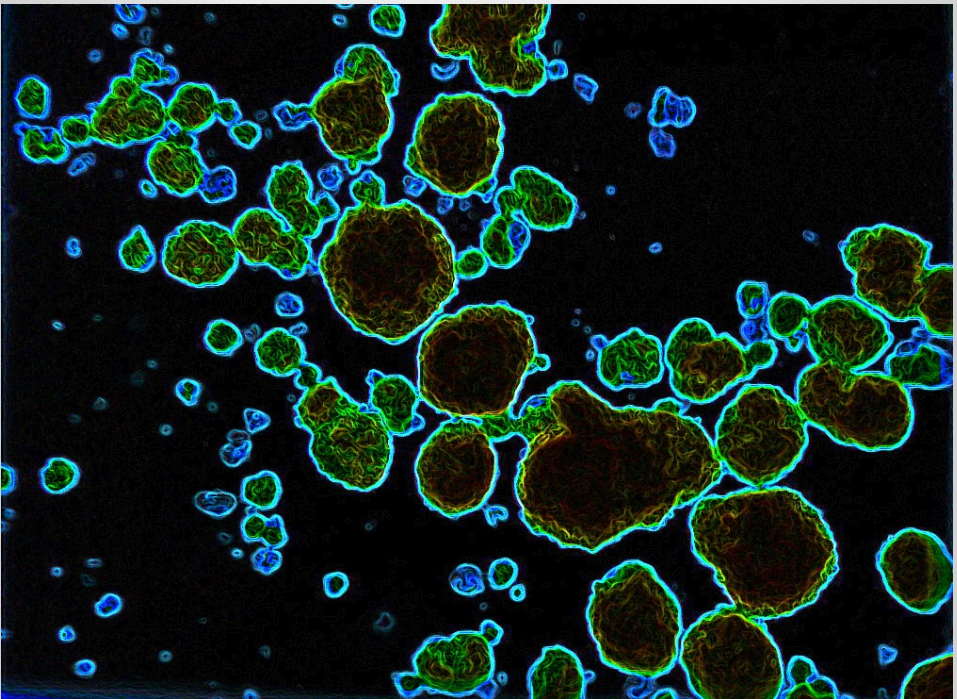
**PR<sup>o</sup>DO**

*Deliver for Health and Well Being*

LABORATORIES INC

Tel: (949)727-1972 27402 Aliso Viejo Pkwy, Aliso Viejo, CA 92656  
www.prodolabs.com

Email: sales@prodolabs.com Fax: (949)727-1936



## ***About us...***

Prodo Laboratories, Inc was founded in September 2006 by David Scharp, MD. It was developed to provide diabetes research services and products to both the academic and corporate diabetes research communities, as well as pursue its own research lines. Prodo Labs contracts directly with biotechnology and pharmaceutical companies needing human islets for their research related to the development of new diabetes drugs and treatments. New diabetes research areas are being explored as potential primary research targets in diabetes for Prodo Labs.